

Program Objectives

Promote early identification and intervention for children with extra needs;

Maximize opportunities for optimal growth and development of the child and family unit;

Provide family-centred service based on caregiver strengths, needs, and priorities;

and within the child's natural environment(s);

Support an integrated approach to planning for Infant Development and Special Needs Resources.

Do you offer service in my neighbourhood? It's hard for me to get to Chatham.

Yes! We will discuss meeting your family at home, childcare, local Ontario Early Years Centre, or other suitable location. Evening appointments are available.

How much does it cost?

All of our services are free!

Do you offer services in French?

Yes! Just ask.

How long do I have to wait for a Consultant to be assigned to my family?

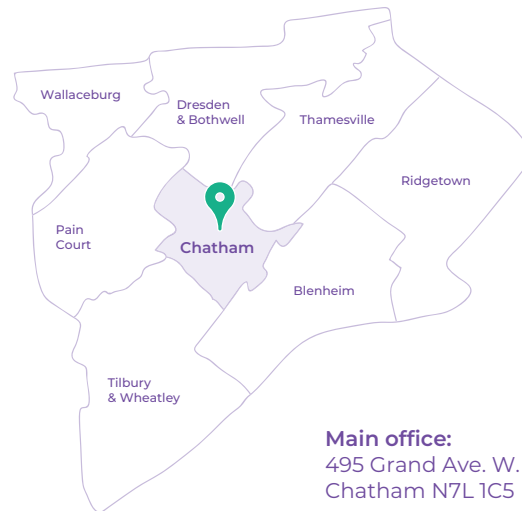
It depends. When your family is referred for service, our Intake Worker will explain the next steps and what to expect. If you are currently on-wait and your needs or circumstances change, let us know right away so that you can be connect-ed to the services that best match your needs.

Client Rights

To Participate in voluntary service

Privacy and Confidentiality

Complaint Policy



Our programs are made possible with help from



Accredited by
Canadian Centre
for Accreditation

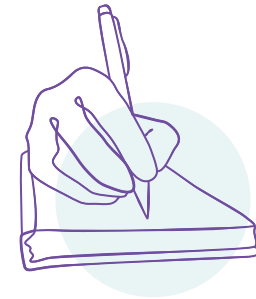


Agréé par
Centre canadien
de l'agrément

Linck has been recognized by the Canadian Centre for Accreditation as having achieved established quality standards in governance, management, service delivery.



Developmental Services



Frequently Asked Questions FAQ

Email info@linck.org
Phone (519) 352-0440



Special Needs Resourcing

This program is designed to support the full inclusion of all children in licensed childcare settings for children ages 0 – 12 years, or an approved recreation program. Support is provided based on the needs of the early learning classroom/group and available Special Needs Resources.

A Developmental Support Worker (DSW) is assigned to children with extra needs for a set number of full or half days per week.

Child & Family Consultants provide Special Needs Resourcing for children in licensed childcare. We provide the following specialized services to childcares:

- Developmental screening and Informal needs assessment;
- Education, support, and coaching for parents and child care providers;
- Links to community services
- For children starting Kindergarten, the Child & Family Consultant will collaborate with the School Board (St. Clair Catholic or Lambton Kent) and the Children's Treatment Centre to support a seamless transition to school.

Infant Child Development Program

The Infant Child Development Program (ICDP) is a free early child development program available to families who have concerns about their child's early development. The program serves children from birth to school entry who have a developmental disability and/or risk of developmental delay. It is primarily a home-based early intervention program working with children and their parents/caregivers to build skills through routines in their daily environment.

The program works with children based on functional needs and concerns; a medical diagnosis is not required. You do not need a referral from your doctor to access this service.

ICDP services included, but are not limited to:

- Help with information about the child's needs and what that means for routines in the home, information and early intervention services within the child's daily environment, and building upon the family's or caregiver's usual routines
- Support for parenting and positive parent/caregiver-child interactions
- Collaborative provision of supports with other local providers in our community.



Intake Mental Health and Development

Intake Mental Health and Development is the first point of contact for families who have questions or would like to make a referral for services. Intake workers conduct assessments of children and youth from birth to age 18 years.

The purpose of the intake process is to determine what agency services best meet the needs of the child or youth and their family and to make recommendations for treatment.

How do I get Services?

Parents/guardians usually refer their children for service. Community partners (such as doctors, child care providers, etc.) can also refer a child—but only with the family's permission.

*If you have concerns about a child's development, or **for more information** on any of our programs and services:*

E-mail mhdevintake@linck.org
Phone 352-0440